



JKON-TEK

To Be The Best Motion Control Provider

Servo Motor ve Step Motor Planet Redüktörleri

Ürün Kataloğu ve
2024-1 Fiyat Listesi



INDEX

Price List	3
-------------------------	----------

PLF Series

PLF060.....	11
PLF080.....	11
PLF090.....	11
PLF120.....	11
PLF160.....	11
PLF-060-L1	13
PLF-060-L2	13
PLF-060-L3	14
PLF-080-L1	14
PLF-080-L2	15
PLF-090-L1	15
PLF-090-L2	16
PLF-090-L3	16
PLF-120-L1	17
PLF-120-L2	17
PLF-120-L3	18
PLF-160-L1	18
PLF-160-L2	19
PLF-160-L3	19

JKON-TEK

To Be The Best Motion Control Provider

Servo Motor ve Step Motor Planet Redüktörleri

- Otomasyon uygulamaları için ekonomik ürünler
- Planet ve düz dişli sistemli servo ve step motor redüktörleri
 - Düşük gürültü <65 db
 - Yüksek verimlilik
 - 1. Kademe <%97
 - 2. Kademe <%95
 - Yüksek hassasiyet
 - 1. Kademe <3 arcmin
 - 2. Kademe <5 arcmin
 - Yüksek giriş devri kapasitesi max. 5000 rpm
 - Yüksek stabilite
 - Yüksek çıkış torku

TÜRKİYE DİSTRİBÜTÖRÜ



400W SERVO MOTOR REDÜKTÖRÜ

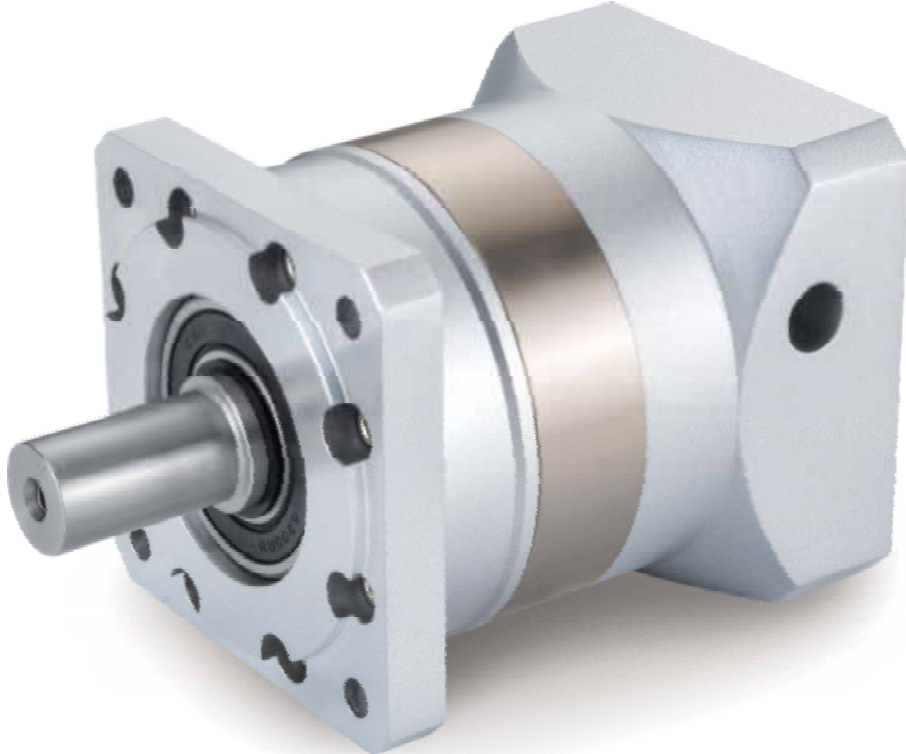
AÇIKLAMA	MODEL NO	FİYAT (USD)
1:3 ÇEVİRİM ORANLI PLANET REDÜKTÖR	PLF060-L1-3-S2-P2-14	120,00
1:10 ÇEVİRİM ORANLI PLANET REDÜKTÖR	PLF060-L1-10-S2-P2-14	120,00

750W SERVO MOTOR REDÜKTÖRÜ

AÇIKLAMA	MODEL NO	FİYAT (USD)
1:3 ÇEVİRİM ORANLI PLANET REDÜKTÖR	PLF090-L1-3-S2-P2-19	165,00
1:10 ÇEVİRİM ORANLI PLANET REDÜKTÖR	PLF090-L1-10-S2-P2-19	165,00

86 FLANŞ STEP MOTOR REDÜKTÖRÜ

AÇIKLAMA	MODEL NO	FİYAT (USD)
1:3 ÇEVİRİM ORANLI PLANET REDÜKTÖR	PLF090-L1-3-S2-P2-14	165,00
1:10 ÇEVİRİM ORANLI PLANET REDÜKTÖR	PLF090-L1-10-S2-P2-14	165,00



Advanced Manufacturing Platform

先进的制造平台



精益化的组装制程，追求完美品质意识，已深入卓蓝人心中。生产效率及品质严格以高标准执行。

从技术到实力，到产业配套，再到制造规模，卓蓝始终走在行业的最前端，继续保持着行业领先，并不断扩大行业优势。

The lean assembly process and the pursuit of perfect quality awareness have been deeply rooted in Zhuoran people. Production efficiency and quality are strictly implemented to high standards.

From technology to strength, to industrial support, to manufacturing scale, Zhuo Lan has always been at the forefront of the industry, continues to maintain industry leadership, and continues to expand its industry advantages.





Provide a solid guarantee
for innovative research and
development

为创新研发提供坚实保障

我们有一支专业的品质管理团队，运用科学的品质管理标准，借助先进的检测设备，对产品在各个环节的质量实行严格管控，确保为客户提供优质产品。

We have a professional quality management team, using scientific quality management standards, with advanced testing equipment, strict quality control of the quality of products in all aspects, to ensure that customers provide quality products.



Precision Testing Center

精密的检测中心



Product features

产品特点

精密行星齿轮减速机是我公司自主研发的新一代实用性产品，具有以下一些主要特点

Precision planetary gear reducer is a new generation of practical products independently developed by our company, which has the following main characteristics



低噪音
Low noise

低于65db。
below 65db.



高输入转速
High input speed

可达5000RPM。
Up to 5000RPM.



低间隙
Low Backlash

单级可达3弧分内，双级可达5弧分内。
One stage within 3 arc minutes, Two stage with 5 arcmin.



高扭矩
High torque

比一般行星减速机扭矩高。
Higher than conventional planetary gearbox.



高效率
High efficiency

单段式在97%以上，双段式在95%以上。
One stage is exceed 97%, Two stage is exceed 95%.



高稳定性
High stability

采用高强度合金钢材，整个齿轮经硬化处理，非只有表面硬化，确保使用寿命及长期使用仍保持最初的精密度。

Using high-strength steel alloy material .Not just hardening on gear surface, but hardening entire gear to insure the gear life time and maintain high accuracy.

Product application

产品用途

精密行星齿轮减速机被广泛应用于以下领域

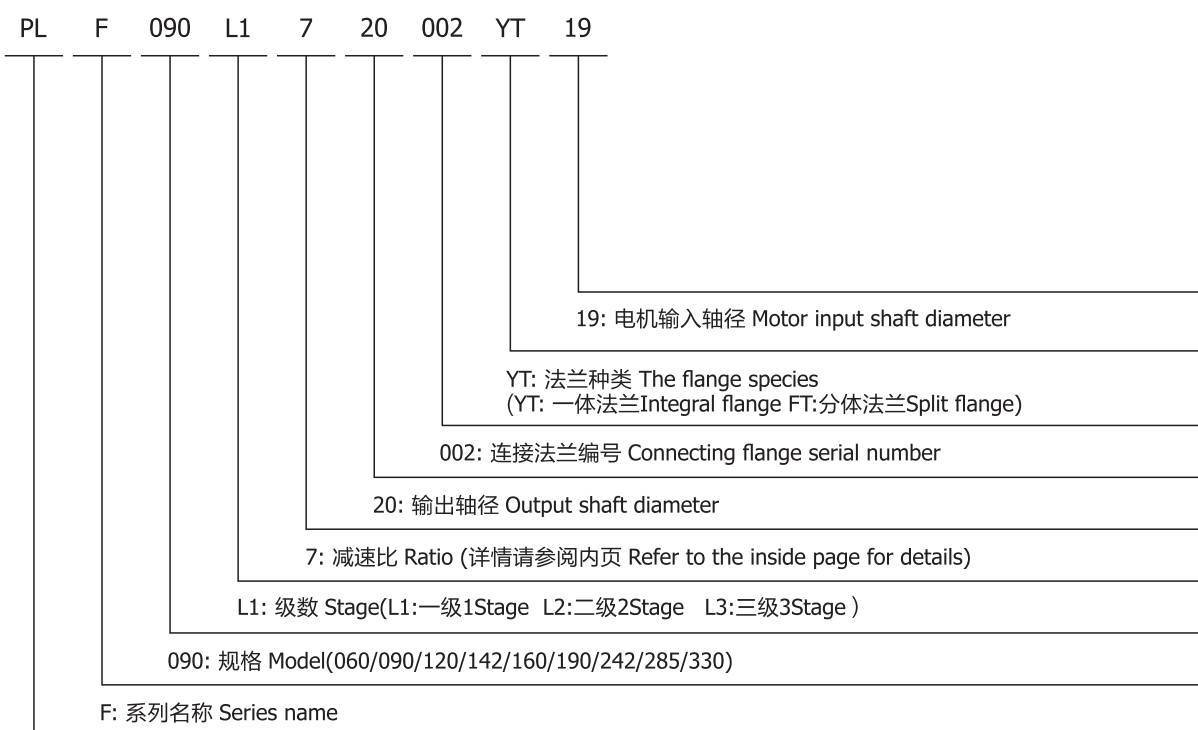
Precision planetary gear reducer is widely used in the following fields

- 01 航空航天、军事产业。
Aerospace, military industries.
- 02 医疗卫生、电子信息技术产业。
Medical health care, electronic information technology industry.
- 03 工业机器人、生产自动化、数控机床制造产业。
Industrial robot, production automation, CNC machine tool manufacturing industry.
- 04 汽车制造、纺织、印刷、食品、冶金、环保工程、仓储物流等产业。
Motor, textile, printing, food, metallurgical, environmental protection engineering, warehouse and logistics industry.

Description Reducer

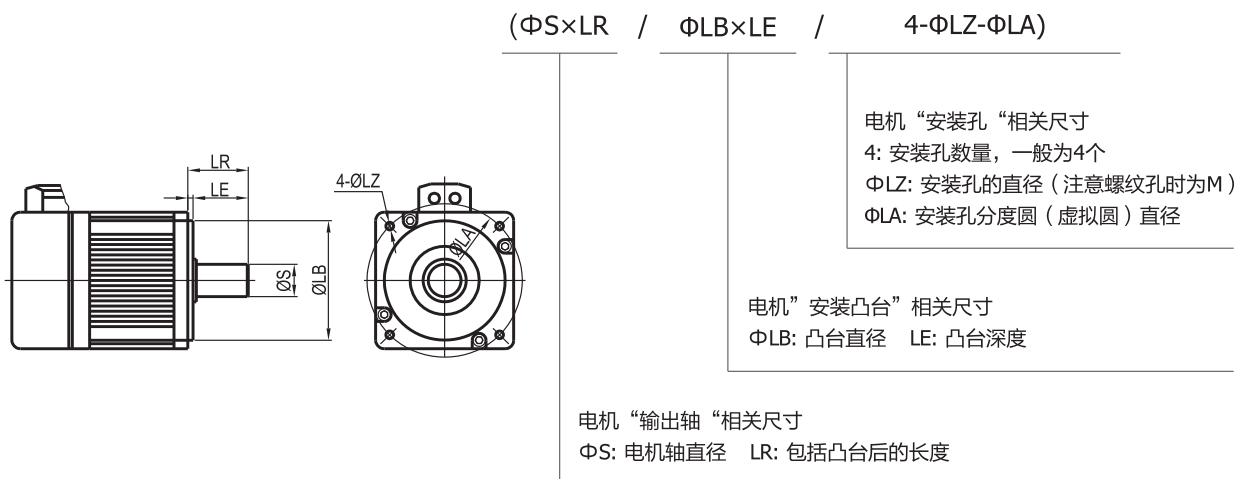
减速机订货说明

减速机型号说明



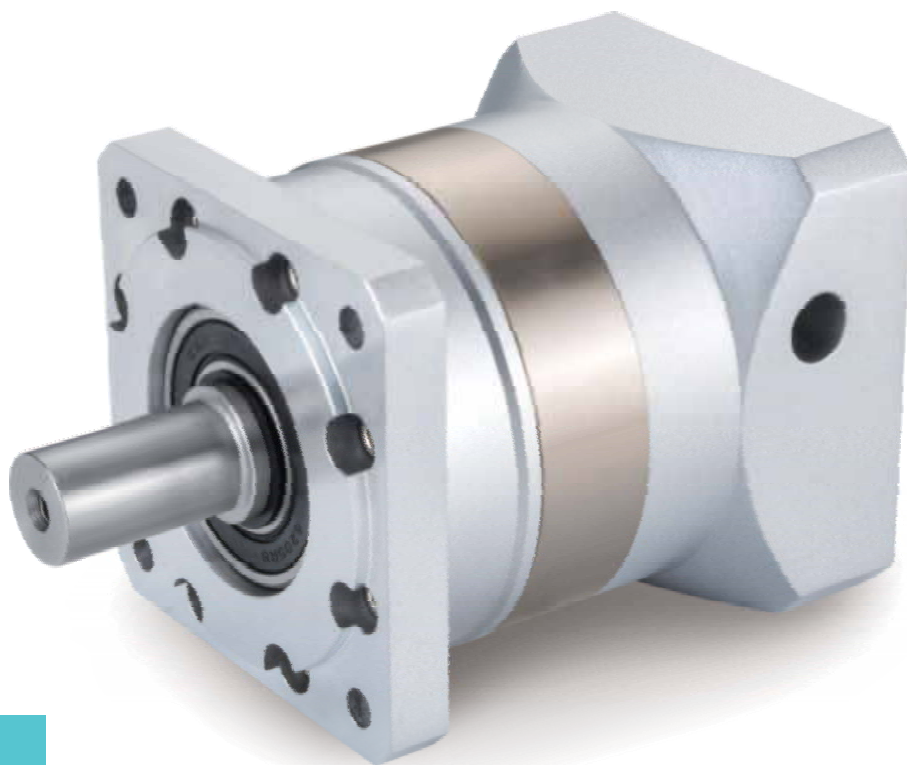
PL: PL减速机的名称 Model name for PL reducer

电机输出安装尺寸说明



PLF Series

- PLF060
- PLF080
- PLF090
- PLF120
- PLF160



PLF

Series

PLF系列减速机核心特性

The Core Characteristics of PLF Series Reducer

- 1 采用直齿齿轮传动，经渗碳淬火处理，齿向齿廓修形处理，确保运行平稳，噪音小；
- 2 结构简单，可大批量生产，且交货期快性价比高；
- 3 减速机种类齐全，可以满足市场上绝大多数减速机的配合。

- 1 Adopt straight tooth gear transmission, through carburizing and quenching treatment, tooth profile modification treatment, ensure smooth operation, low noise.
- 2 Simple structure, mass production, and fast delivery time and high cost performance.
- 3 Reducer has a complete range, which can meet the needs of most reducer in the market.

减速机性能资料

Gear box performance information

型号 Model	单位 Unit	PLF060	PLF080	PLF090	PLF120	PLF160	减速比 Ratio	Stage	
额定输出扭矩 Rated output torque	N·m	16.5	60	60	148	310	3	1	
		27	86	86	222	605	4		
		27	94.5	94.5	235	420	5		
		19.5	64	64	158	(270)	7(8)		
		8.5	39.5	39.5	93	-	10		
			96	96	250	680	12	2	
			96	96	250	-	15		
		30	96	96	250	680	16		
		30	96	96	250	680	20		
		33	105.5	105.5	264	460	25		
		30	96	96	250	(680)	28(32)		
		33	105.5	105.5	264	-	35		
		30	96	96	250	460	40		
			33	105.5	105.5	264	(310)	50(64)	
			21.5	71.5	71.5	177	-	70	3
			37.5	120	120	310	900	64	
			37.5	120	120	310	900	80	
			37.5	120	120	310	900	100	
			41.0	132.5	132.5	329	580	125	
			37.5	120	120	310	(580)	140(160)	
	41.0	132.5	132.5	329	-	175			
	37.5	120	120	310	580	200			
	41.0	132.5	132.5	329	(900)	250(256)			
	37.5	120	120	310	(580)	280(320)			
	41.0	132.5	132.5	329	(400)	350(512)			
故障停滞扭矩 Emergency stop torque	N·m	2倍额定输出扭矩 2 times Rated output torque							
额定输入转速 Norminal input speed	rmp	3000	3000	3000	2000	2000			
最大输入转速 Maximum input speed	rmp	6000	6000	6000	3500	3500			
最大径向力 Maximum radial force	N	170	1020	1020	2230	3200			
最大轴向力 Maximum axial force	N	120	850	850	1550	3000			
效率 Efficiency	%	Single [97%]			Double [95%]				
平均寿命 Average lifetime	h	20000							
重量 Weight	kg	1.4	3.7	4.7	6.9	19		1	
		1.6	4.2	5.3	8.9	25		2	
		1.8	4.7	5.9	11.2	31		3	

减速机性能资料

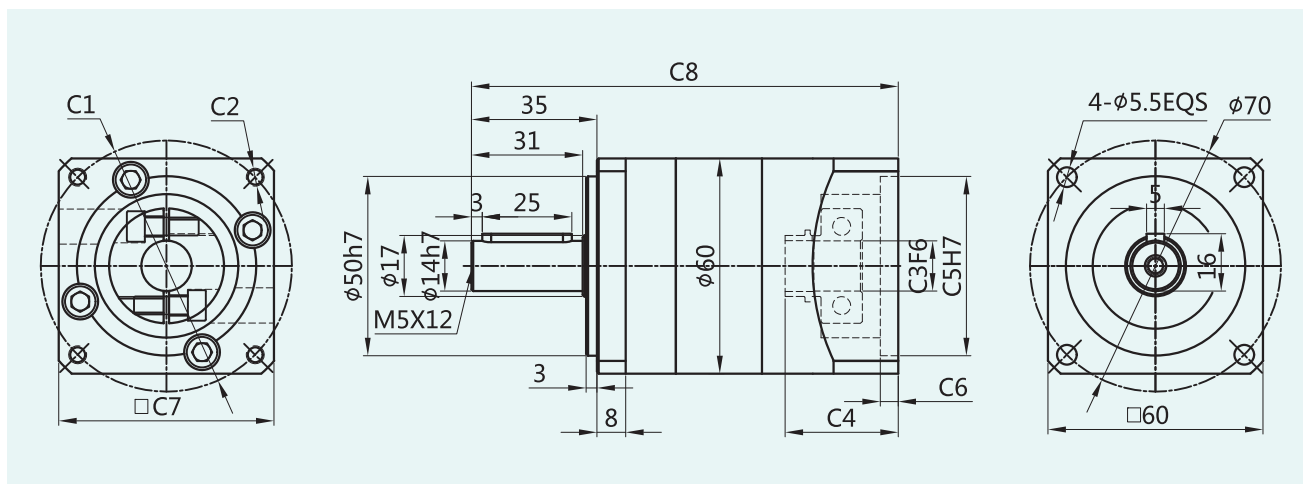
Gear box performance information

型号 Model	单位 Unit	PLF060	PLF080	PLF090	PLF120	PLF160	减速比 Ratio	Stage
转动惯量 Moment of inertia	kgcm ²	0.107	0.4	0.4	1.65	4.31	3	1
		0.094	0.309	0.309	1.22	5.15	4	
		0.092	0.291	0.291	1.15	4.93	5	
		0.091	0.285	0.285	1.13	(4.84)	7(8)	
		0.091	0.283	0.283	1.11	-	10	
			0.4	0.4	1.65	6.31	12	2
			0.309	0.309	1.65	-	15	
		0.094	0.291	0.291	1.22	5.15	16	
		0.092	0.291	0.291	1.15	4.93	20	
		0.092	0.291	0.291	1.15	4.93	25	
		0.091	0.285	0.285	1.13	(4.84)	28(32)	
		0.091	0.285	0.285	1.13	-	35	
		0.091	0.2835	0.2835	1.11	4.84	40	
		0.091	0.283	0.283	1.11	(4.84)	50(64)	
		0.091	0.283	0.283	1.11	-	70	
		0.092	0.291	0.291	1.15	4.93	64	3
		0.092	0.291	0.291	1.15	4.93	80	
		0.092	0.291	0.291	1.15	4.93	100	
		0.092	0.291	0.291	1.15	4.84	125	
		0.091	0.291	0.291	1.13	(4.84)	140(160)	
		0.091	0.291	0.291	1.13	-	175	
		0.091	0.283	0.283	1.11	4.84	200	
		0.091	0.283	0.283	1.11	(4.84)	250(256)	
0.091	0.283	0.283	1.11	(4.84)	280(320)			
0.091	0.283	0.283	1.11	(4.84)	350(512)			
噪音 Noise	dB	60	65	65	68	70		
润滑 Lubricating		合成油脂润滑 Synthetic grease lubrication						
防护等级 levels of protection		IP65						

外形尺寸图表

Outline dimensional

PLF-060-L1

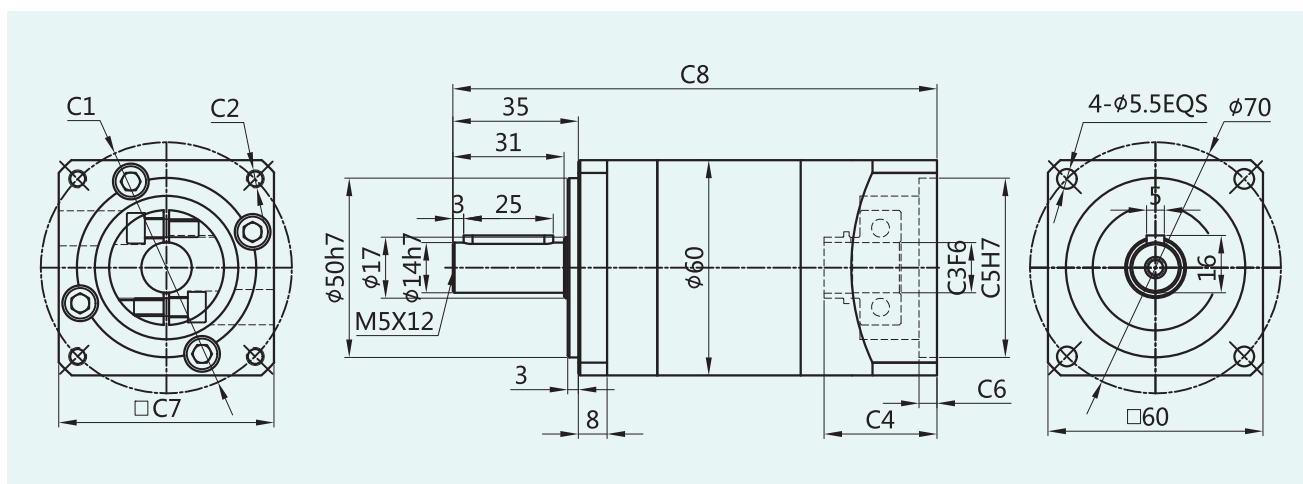


适配电机输入接口尺寸(左端为输入尺寸)

Adapter motor input interface size (The left end is the input size)

尺寸 Size	C1	C2	C3	C4	C5	C6	C7	C8
PLF-060-L1	□47.14	4-M4	Φ8	31.5	Φ38.1	5.0	60	119
	Φ46	4-M4	Φ8	31.5	Φ30	5.0	60	119
	Φ45	4-M3	Φ8	31.5	Φ30	5.0	60	119
	Φ70	4-M4/4-M5	Φ14	31.5	Φ50	5.0	60	119

PLF-060-L2



适配电机输入接口尺寸(左端为输入尺寸)

Adapter motor input interface size (The left end is the input size)

尺寸 Size	C1	C2	C3	C4	C5	C6	C7	C8
PLF-060-L2	□47.14	4-M4	Φ8	31.5	Φ38.1	5.0	60	135
	Φ46	4-M4	Φ8	31.5	Φ30	5.0	60	135
	Φ45	4-M3	Φ8	31.5	Φ30	5.0	60	135
	Φ70	4-M4/4-M5	Φ14	31.5	Φ50	5.0	60	135

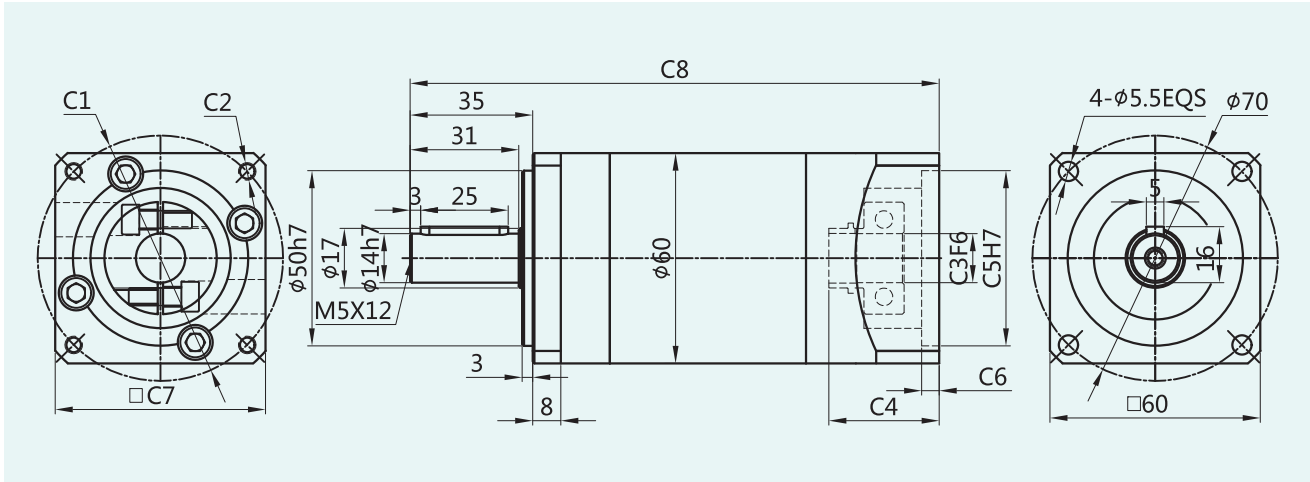
PLF Series

PLF

外形尺寸图表

Outline dimensional

PLF-060-L3

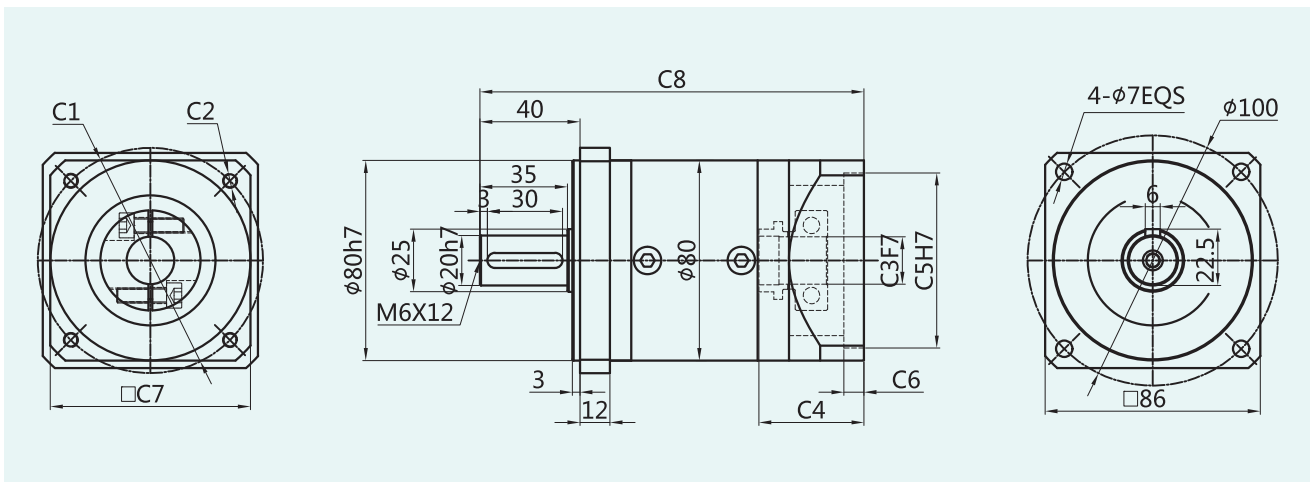


适配电机输入接口尺寸(左端为输入尺寸)

Adapter motor input interface size (The left end is the input size)

尺寸 Size	C1	C2	C3	C4	C5	C6	C7	C8
PLF-060-L3	$\square 47.14$	4-M4	$\phi 8$	31.5	$\phi 38.1$	5.0	60	151
	$\phi 46$	4-M4	$\phi 8$	31.5	$\phi 30$	5.0	60	151
	$\phi 45$	4-M3	$\phi 8$	31.5	$\phi 30$	5.0	60	151
	$\phi 70$	4-M4/4-M5	$\phi 14$	31.5	$\phi 50$	5.0	60	151

PLF-080-L1



适配电机输入接口尺寸(左端为输入尺寸)

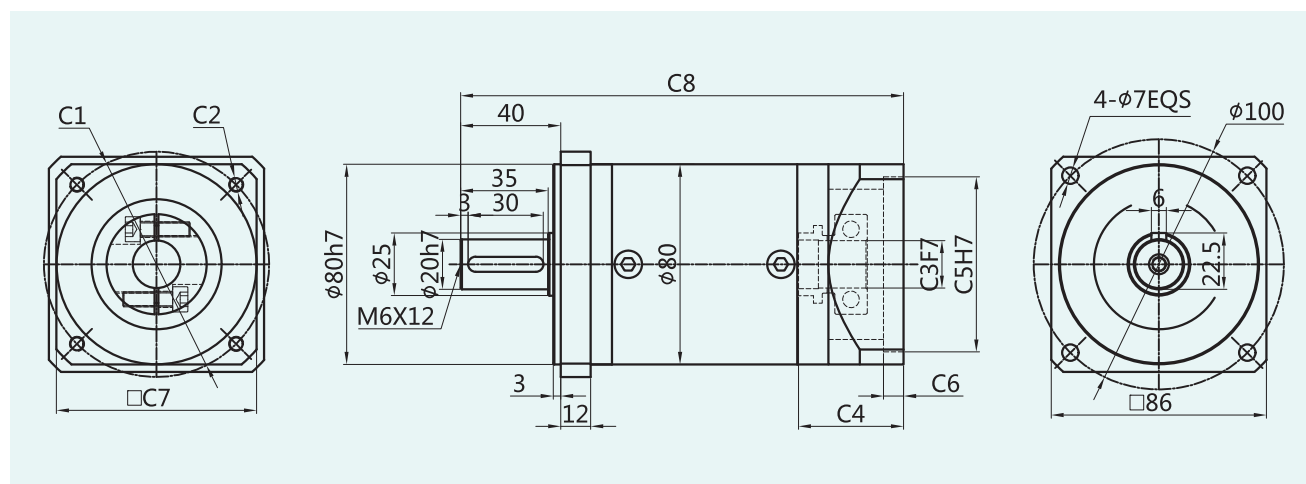
Adapter motor input interface size (The left end is the input size)

尺寸 Size	C1	C2	C3	C4	C5	C6	C7	C8
PLF-080-L1	$\phi 70$	4-M4/4-M5	$\phi 14$	42	$\phi 50$	8.0	80	153
	$\square 69.6$	4-M6	$\phi 14$	42	$\phi 73$	8.0	80	153
	$\phi 90$	4-M5/4-M6	$\phi 19$	42	$\phi 70$	8.0	80	153

外形尺寸图表

Outline dimensional

PLF-080-L2

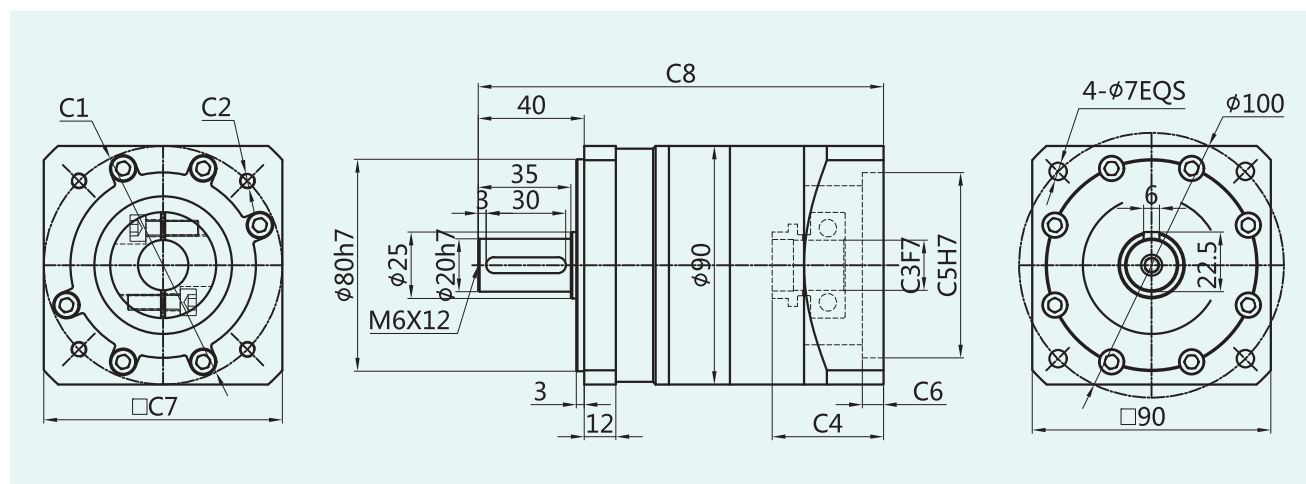


适配电机输入接口尺寸(左端为输入尺寸)

Adapter motor input interface size (The left end is the input size)

尺寸 Size	C1	C2	C3	C4	C5	C6	C7	C8
PLF-080-L2	Φ70	4-M4/4-M5	Φ14	42	Φ50	8.0	80	176.5
	□69.6	4-M6	Φ14	42	Φ73	8.0	80	176.5
	Φ90	4-M5/4-M6	Φ19	42	Φ70	8.0	80	176.5

PLF-090-L1



适配电机输入接口尺寸(左端为输入尺寸)

Adapter motor input interface size (The left end is the input size)

尺寸 Size	C1	C2	C3	C4	C5	C6	C7	C8
PLF-090-L1	Φ70	4-M4/4-M5	Φ14	42	Φ50	8.0	90	153
	□69.6	4-M6	Φ14	42	Φ73	8.0	90	153
	Φ90	4-M5/4-M6	Φ19	42	Φ70	8.0	90	153

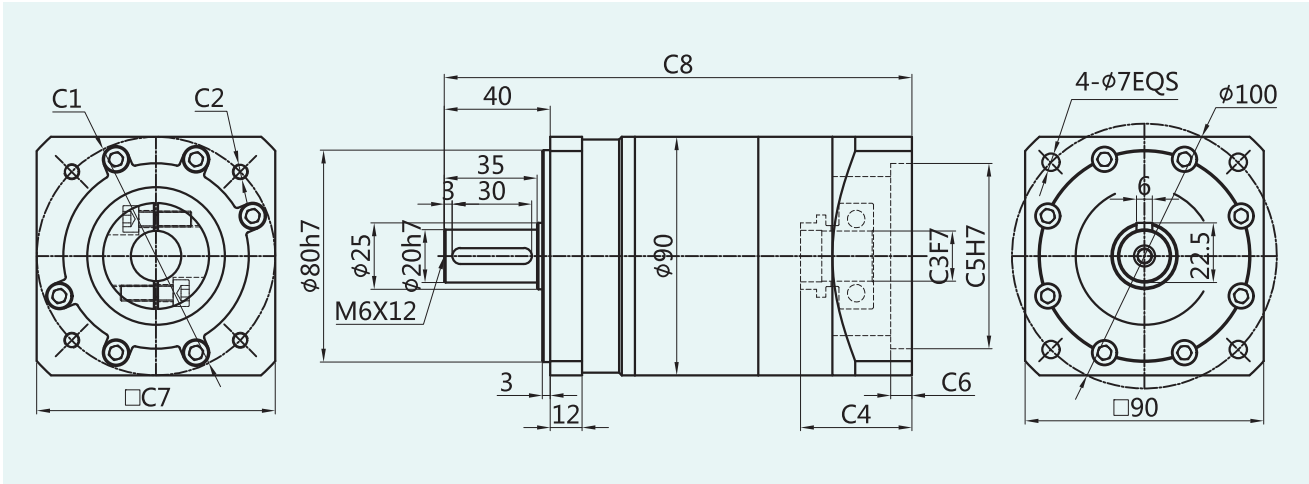
PLF Series

PLF

外形尺寸图表

Outline dimensional

PLF-090-L2

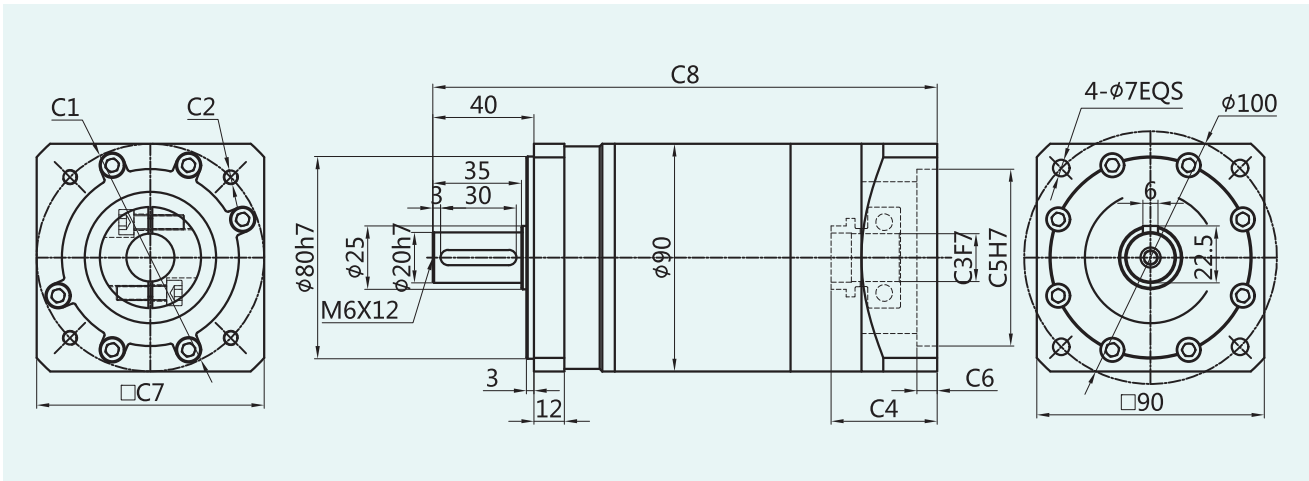


适配电机输入接口尺寸(左端为输入尺寸)

Adapter motor input interface size (The left end is the input size)

尺寸 Size	C1	C2	C3	C4	C5	C6	C7	C8
PLF-090-L2	$\phi 70$	4-M4/4-M5	$\phi 14$	42	$\phi 50$	8.0	90	176.5
	$\square 69.6$	4-M6	$\phi 14$	42	$\phi 73$	8.0	90	176.5
	$\phi 90$	4-M5/4-M6	$\phi 19$	42	$\phi 70$	8.0	90	176.5

PLF-090-L3



适配电机输入接口尺寸(左端为输入尺寸)

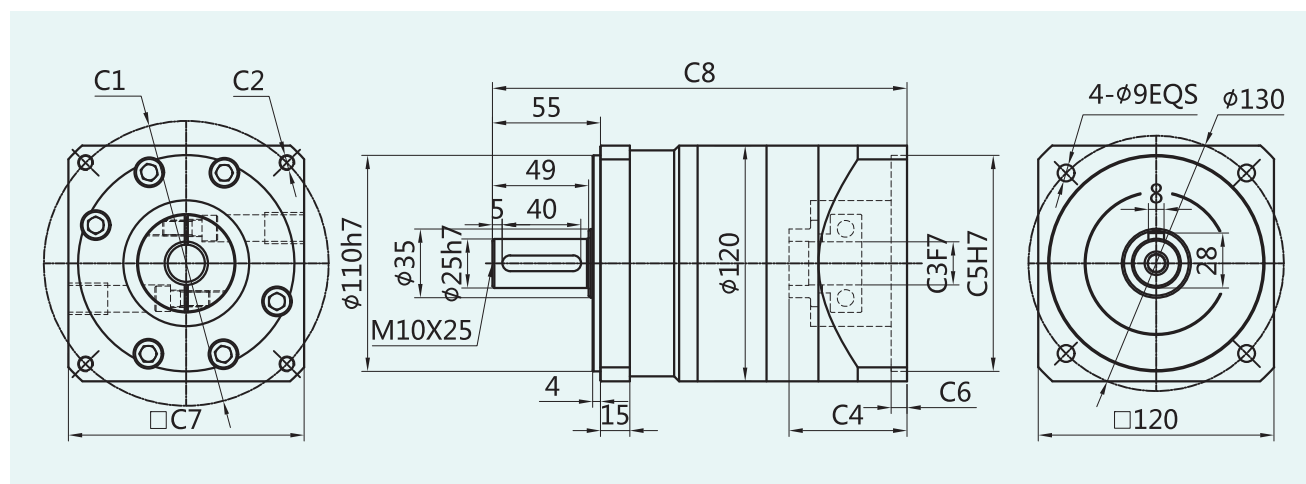
Adapter motor input interface size (The left end is the input size)

尺寸 Size	C1	C2	C3	C4	C5	C6	C7	C8
PLF-090-L3	$\phi 70$	4-M4/4-M5	$\phi 14$	42	$\phi 50$	8.0	90	199.5
	69.6	4-M6	$\phi 14$	42	$\phi 73$	8.0	90	199.5
	$\phi 90$	4-M5/4-M6	$\phi 19$	42	$\phi 70$	8.0	90	199.5

外形尺寸图表

Outline dimensional

PLF-120-L1

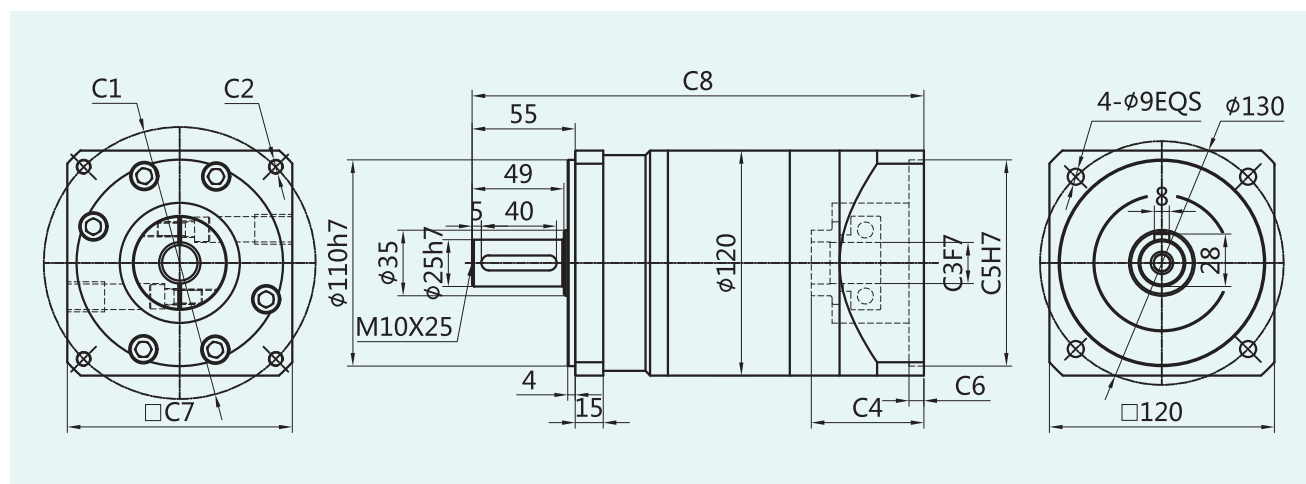


适配电机输入接口尺寸(左端为输入尺寸)

Adapter motor input interface size (The left end is the input size)

尺寸 Size	C1	C2	C3	C4	C5	C6	C7	C8
PLF-120-L1	Φ90	4-M5/4-M6	Φ19	47	Φ70	8	90	200
	Φ115	4-M8	Φ19/Φ22	60	Φ95	8	130	211
	Φ130	4-M8	Φ19/Φ22	60	Φ95	8	130	211
	Φ145	4-M8	Φ19/Φ22/Φ24	60	Φ110	8	180	211

PLF-120-L2



适配电机输入接口尺寸(左端为输入尺寸)

Adapter motor input interface size (The left end is the input size)

尺寸 Size	C1	C2	C3	C4	C5	C6	C7	C8
PLF-120-L2	Φ90	4-M5/4-M6	Φ19	47	Φ70	8	90	230
	Φ115	4-M8	Φ19/Φ22	60	Φ95	8	130	241
	Φ130	4-M8	Φ19/Φ22	60	Φ95	8	130	241
	Φ145	4-M8	Φ19/Φ22/Φ24	60	Φ110	8	180	241

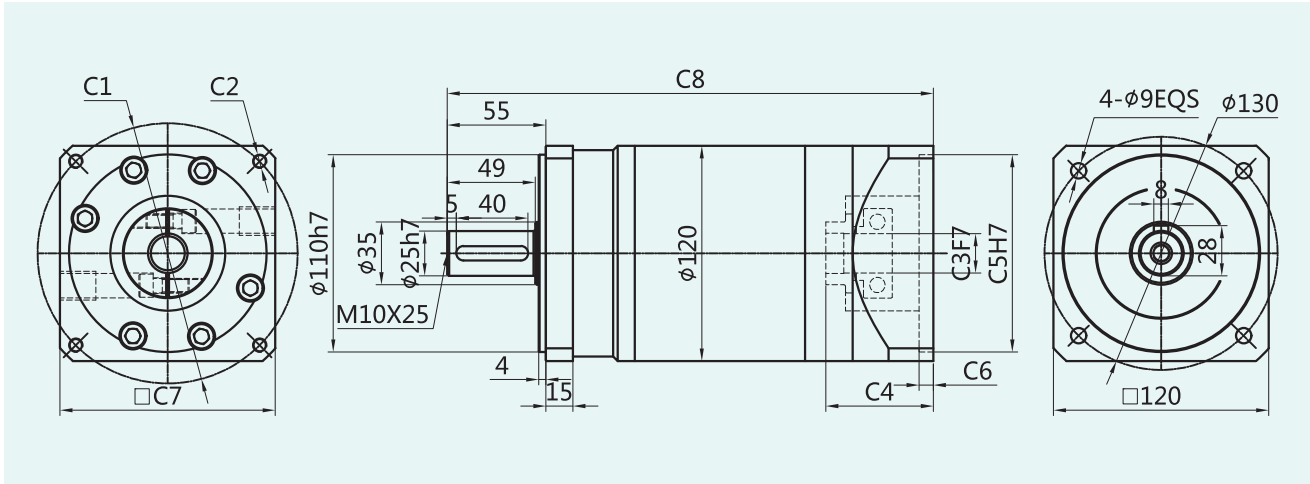
PLF Series

PLF

外形尺寸图表

Outline dimensional

PLF-120-L3

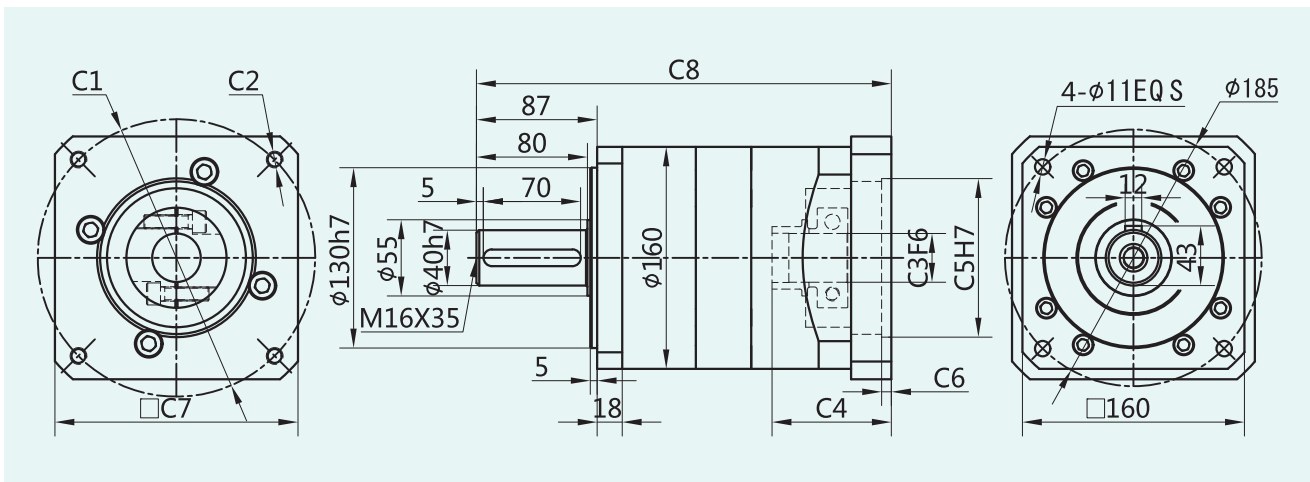


适配电机输入接口尺寸(左端为输入尺寸)

Adapter motor input interface size (The left end is the input size)

尺寸 Size	C1	C2	C3	C4	C5	C6	C7	C8
PLF-120-L3	Φ90	4-M5/4-M6	Φ19	47	Φ70	8	90	260
	Φ115	4-M8	Φ19/Φ22	60	Φ95	8	130	271
	Φ130	4-M8	Φ19/Φ22	60	Φ95	8	130	271
	Φ145	4-M8	Φ19/Φ22/Φ24	60	Φ110	8	180	271

PLF-160-L1



适配电机输入接口尺寸(左端为输入尺寸)

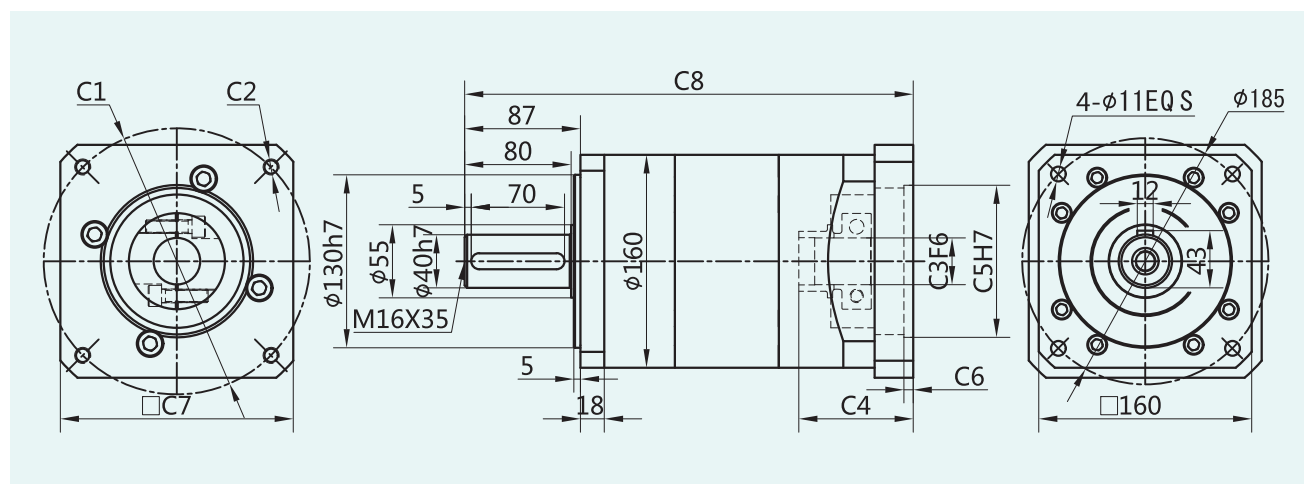
Adapter motor input interface size (The left end is the input size)

尺寸 Size	C1	C2	C3	C4	C5	C6	C7	C8
PLF-160-L1	Φ130	4-M8	Φ22	62	Φ95	7	142	275
	Φ145	4-M8	Φ22/Φ24	62	Φ110	7	142	275
	Φ165	4-M10	Φ32	62	Φ130	7	142	275
	Φ200	4-M12	Φ35	86	Φ114.3	7	175	299
	Φ200	4-M12	Φ35	117	Φ114.3	7	175	330
	Φ215	4-M12	Φ38/Φ42	86	Φ180	7	190	299

外形尺寸图表

Outline dimensional

PLF-160-L2

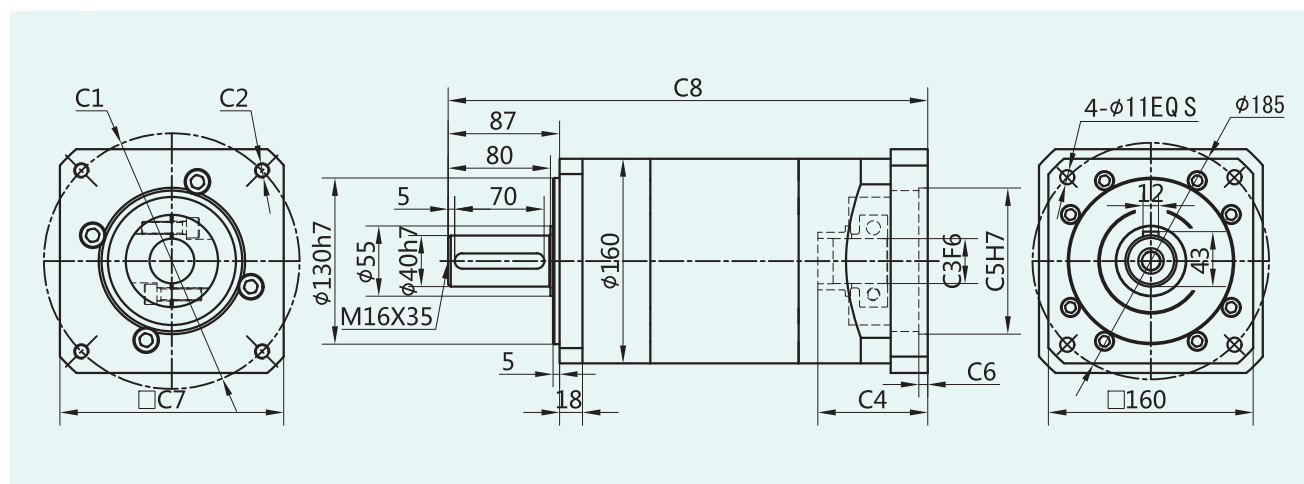


适配电机输入接口尺寸(左端为输入尺寸)

Adapter motor input interface size (The left end is the input size)

尺寸 Size	C1	C2	C3	C4	C5	C6	C7	C8
PLF-160-L2	Φ130	4-M8	Φ22	62	Φ95	7	142	313
	Φ145	4-M8	Φ22/Φ24	62	Φ110	7	142	313
	Φ165	4-M10	Φ32	62	Φ130	7	142	313
	Φ200	4-M12	Φ35	86	Φ114.3	7	175	337
	Φ200	4-M12	Φ35	117	Φ114.3	7	175	368
Φ215	4-M12	Φ38/Φ42	86	Φ180	7	190	337	

PLF-160-L3



适配电机输入接口尺寸(左端为输入尺寸)

Adapter motor input interface size (The left end is the input size)

尺寸 Size	C1	C2	C3	C4	C5	C6	C7	C8
PLF-160-L3	Φ130	4-M8	Φ22	62	Φ95	7	142	351
	Φ145	4-M8	Φ22/Φ24	62	Φ110	7	142	351
	Φ165	4-M10	Φ32	62	Φ130	7	142	351
	Φ200	4-M12	Φ35	86	Φ114.3	7	175	375
	Φ200	4-M12	Φ35	117	Φ114.3	7	175	406
Φ215	4-M12	Φ38/Φ42	86	Φ180	7	190	375	

JKON-TEK

To Be The Best Motion Control Provider

Servo Motor ve Step Motor Planet Redüktörleri

TÜRKİYE DİSTRİBÜTÖRÜ

max
otomasyon

Mühendislik ve Elektrik San. Tic. Ltd. Şti.

İSTANBUL

- İkitelli OSB Mah. Bedrettin Dalan Bulvarı Metro34
Plaza No: 25 Başakşehir/ İstanbul
- 0 212 220 42 48 0212 220 43 49
- info@maxotomasyon.com
- www.maxotomasyon.com

BURSA

- Alaaddin Bey Mah. 618. Sk. No: 6C
Nilüfer BURSA
- 0224 443 57 81 - 82 - 83
- 0224 443 57 92
- info@maxotomasyon.com

